



# HARINGEY family HUBS

## What is a Family Hub?

A Family Hub is a place where children, young people, and their families can go to access family support services from different agencies in their local area. Family Hubs are for families of children 0-19 years, or up to 25 years for Special Educational Needs and Disabilities (SEND).

Each hub will bring together a range of services for children and families at, or via, one place.

## What's on at my local Family Hub?

Family Hubs will offer a wide range of activities, with weekly timetables, covering: health visiting, housing, mental health, maternity, debt and welfare advice, family relationships, parenting support and much more! Along with a 'Start for Life' offer, which focuses on resources to assist a child's critical first 100,1 days of life - giving them the best start in life.



Scan for the 'Start  
for Life' offer



Scan for 'Family  
Hubs' offer



## Further information

To find out more about Family Hubs visit [www.haringey.gov.uk/familyhubs](http://www.haringey.gov.uk/familyhubs) or email any queries to: [familyhubs@haringey.gov.uk](mailto:familyhubs@haringey.gov.uk)

Family hubs will be open from Monday to Friday, with some services offered at evenings and weekends.

**Haringey**  
LONDON

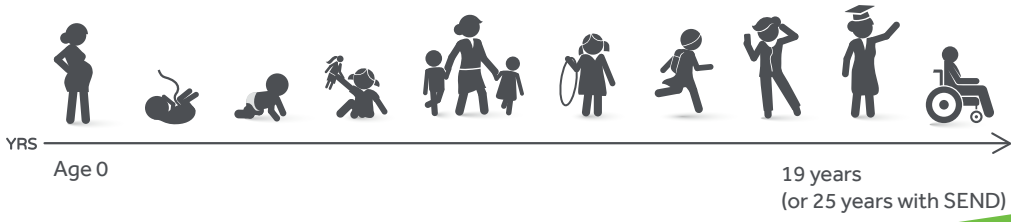
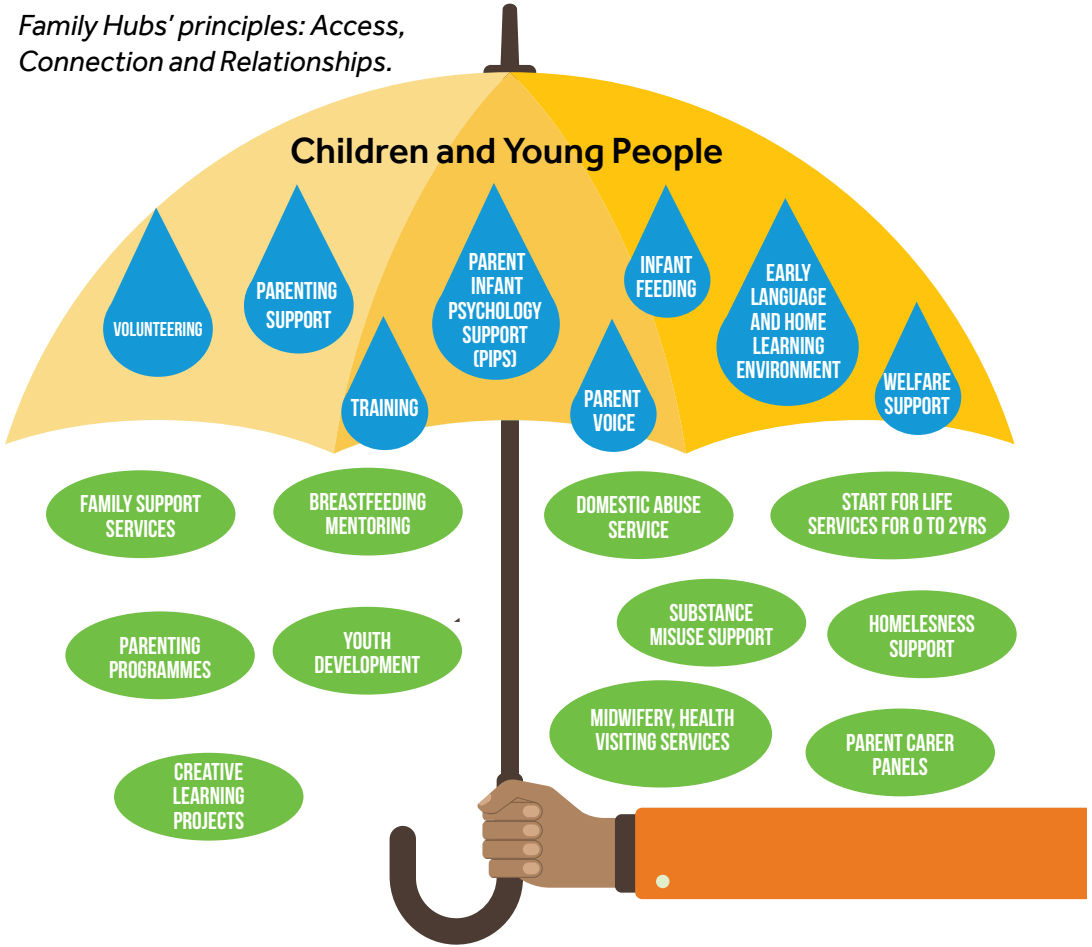


# HARINGEY family HUBS

For families with children 0 - 19 years, or up to 25 years for Special Educational Needs and Disabilities (SEND)

Family Hubs' principles: Access, Connection and Relationships.

## Children and Young People



[www.haringey.gov.uk/familyhubs](http://www.haringey.gov.uk/familyhubs)

**Haringey**  
LONDON